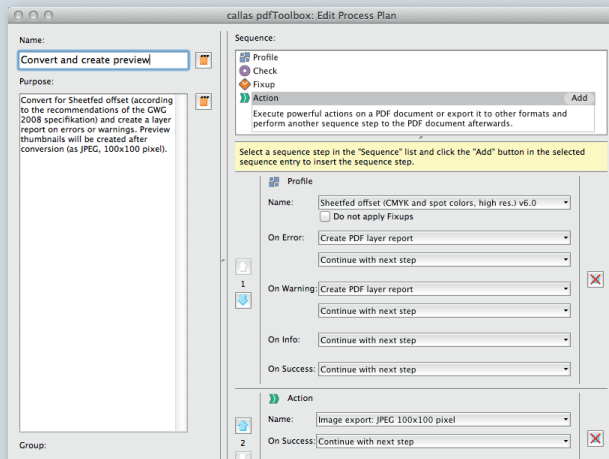


Dynamic preflighting, flexibility to the max

For years, pdfToolbox has had the ability to include variables in preflight profiles. This allows preflight checking and conversion to **dynamically change based on the processed PDF file or its associated metadata**, which is of great value in more complex preflight workflows. Now pdfToolbox also includes **process plans, which brings conditional processing** to preflight workflows.



Support for variables

Dynamically change the properties of preflight checks and fixes in a profile. In workflows where only some parameters change often (for example when checking sizes of incoming advertisements), this can be used to **dramatically reduce complexity**. The same technology also allows switching specific checks or fixes on or off while processing files. **Powerful yet easy to setup and use.**

Process plans

Define a number of steps a PDF file should be processed through. Each step can be a preflight profile, a single preflight check or a fix or an action (such as creating images, creating a booklet, adding a layer...). Process plans allow **generating preflight reports based on the result of each step**, or can jump between different steps based on the processing result of a previous step.

More than PDF

Many workflows need more than simple PDF preflight and correction; pdfToolbox is uniquely suited to go all the way. It can be used to impose PDF documents, automatically convert Office documents to PDF, generate thumbnails or preview images and more...

- Convert Office formats (such as Microsoft Word, PowerPoint and Publisher) automatically to PDF; fixing common problems with document formats and colors automatically
- Convert images and PostScript files as well
- Generate PostScript and EPS from PDF or create production-accurate thumbnails or preview images in TIFF, Jpeg and PNG format
- Use the full-featured imposition engine to create booklets, doing a step-and-repeat or performing more complex imposition tasks
- Split PDF files into different documents or merge files together, secure PDF files with passwords or re-distill them to fix problems



pdfToolbox Server

Fully automated and ready for integration
on Mac, Windows and Linux

pdfToolbox Desktop

PDF production toolkit, Standalone or
inside Acrobat on Mac and Windows

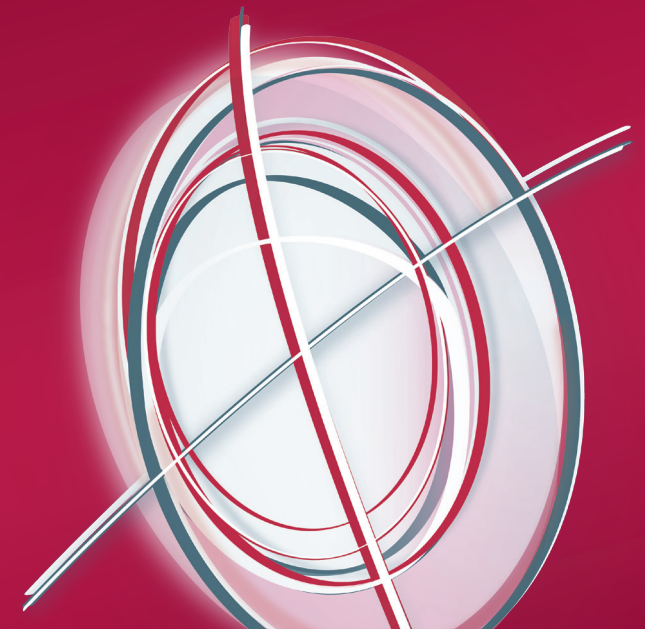


callas software gmbh
Your PDF problems solved

info@callassoftware.com
www.callassoftware.com

callas pdfToolbox

The most powerful and dynamic
PDF engine on the market



- Fully unattended processing of thousands of files, or quick visual inspection and fixing by an operator
- Uses rock-solid Adobe technology
- Provides quality control, automatic fixing of common problems, impositioning, conversion to and from PDF and more.



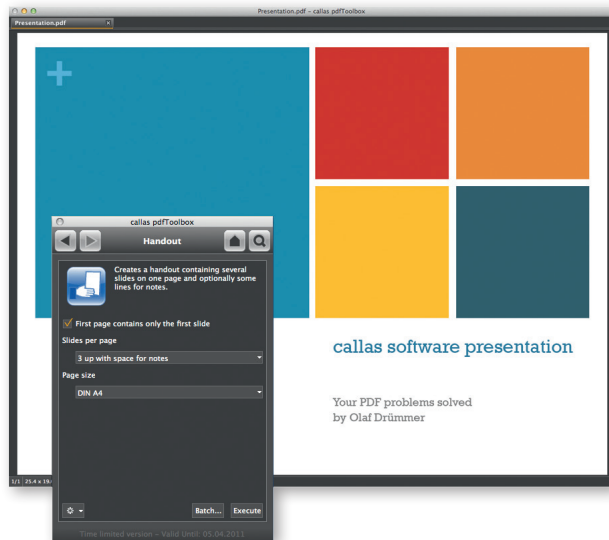
callas software gmbh
Your PDF problems solved

callas software products are distributed by Four Pees
Leiekaai 25a ■ B-9000 Gent ■ tel +32 9 237 10 00
www.fourpees.com ■ info@fourpees.com

Fixing problems... or simply reporting them

callas pdfToolbox **supports all relevant PDF preflight standards**. It can inspect PDF files or simply fix them fully automatically. All according to your guidelines; use default preflight profiles or customize them to fit your needs.

- Supports all ISO PDF/X and ISO PDF/A standards
- Provides support for PDF/VT, PDF/E and the GWG market specific profiles



Secure-Flight takes a snapshot before the file is modified and **automatically compares it to an “after” snapshot**; if any differences are detected in how the file is rendered a preflight error is generated and the PDF file is dropped into the error folder.

This comparison technology can also be used by an operator to see differences between different versions of PDF files. Part of the pdfToolbox Visualizer tools, this technology also allows visual inspection of PDF files to further analyze common problems such as ink coverage overruns, incorrect separations, thin lines or small text, safety zone issues or lack of proper bleed.

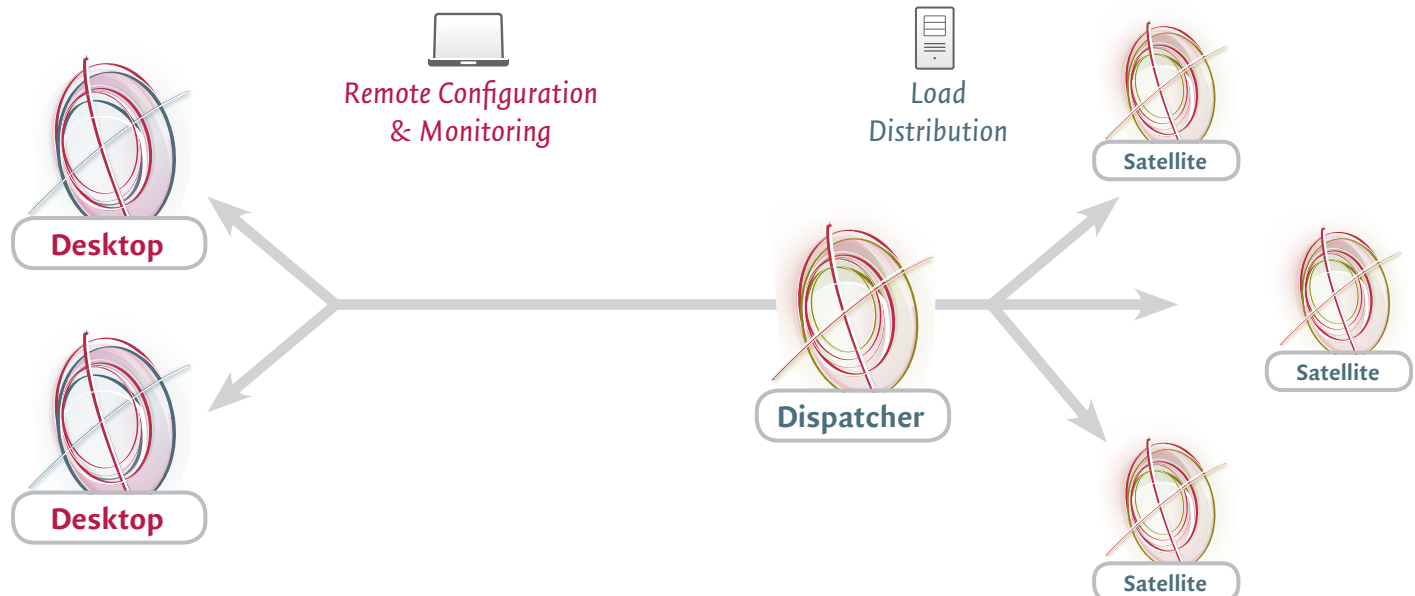
Automatic preflight followed by visual inspection of suspect files: the key to an efficient workflow.

Comfortably in control

Whether a single pdfToolbox Server is used, or pdfToolbox Dispatcher shares the load across different systems, setting up and monitoring processing can be a complex task. pdfToolbox simplifies this by allowing **remote configuration and remote monitoring** of any pdfToolbox installation.

All pdfToolbox Server management tools have been built into pdfToolbox Desktop. From the desktop application it is possible to start a local server or connect to one or more remote servers. This enables you to **test preflight profiles or process plans locally and configure a remote server** with them once you're completely satisfied with what they do.

For any managed pdfToolbox Server watched folders could be started, stopped or reconfigured. For each configured workflow an overview of current activities is shown and the full history of processed PDF files can be consulted. Each managed pdfToolbox Server can be protected with an access code to enforce proper access rights if needed.



PDF power on all levels

pdfToolbox comes as a hands-on version that runs as a **plug-in** in Adobe Acrobat or as a fast and efficient **standalone application**. But of course its real power shines through in an **automated workflow** where PDF files are handled fully unattended. It's not even limited to one computer; using **automatic load balancing**, it can dispatch work to be done by different computers in your network for additional processing power.

- Use a watched folder mechanism where files are automatically picked-up and processed
- If more control is necessary, use the command-line interface. And for the closest integrations a full developer SDK is available
- Run pdfToolbox Desktop or Server on Mac and Windows computers; and the CLI and SDK additionally on Linux and Unix based systems
- Dispatch jobs to satellites for instant load balancing across different systems. Configure and monitor just the dispatcher for easy setup and maintenance