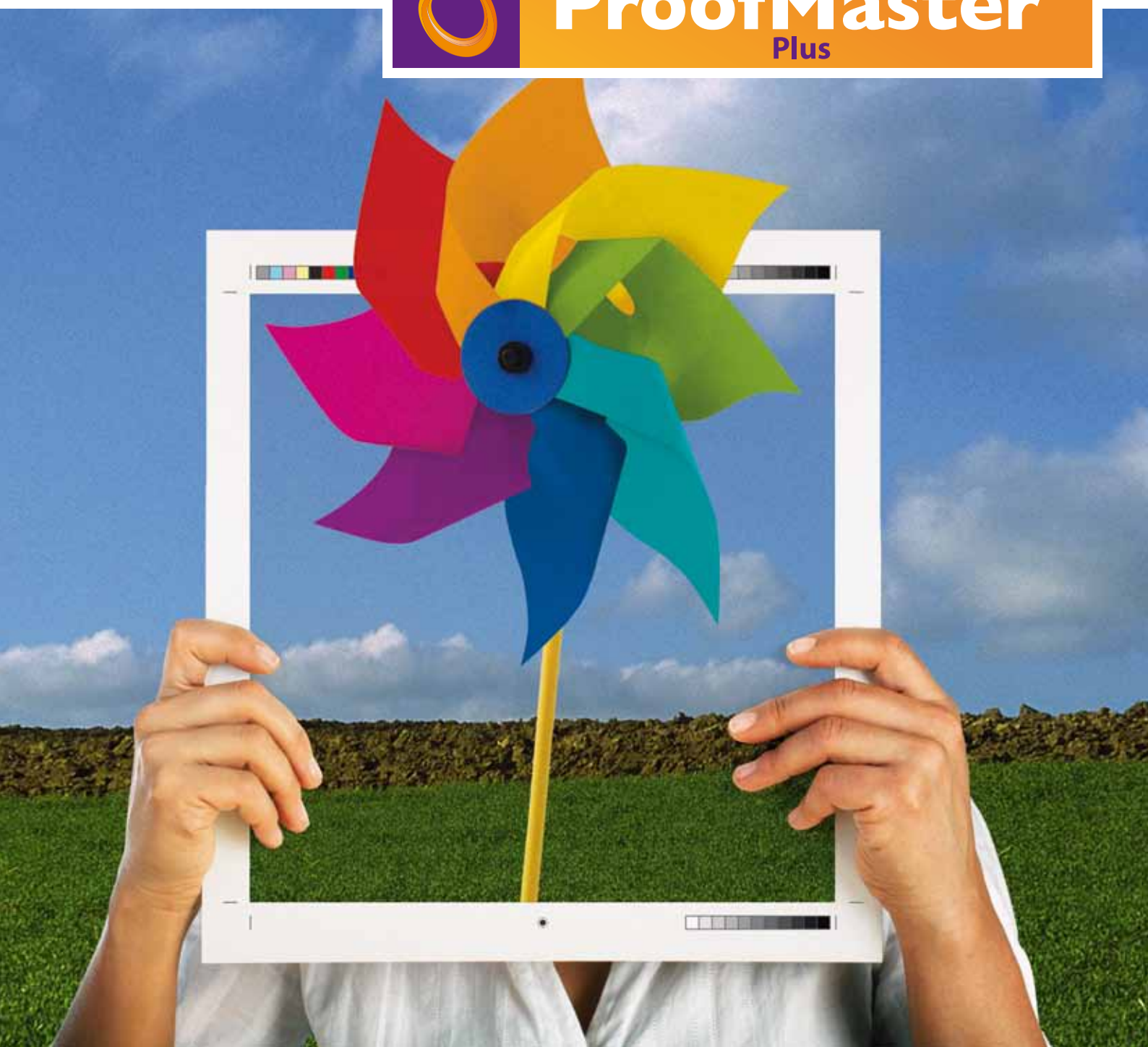


Contractual quality.
Amazing results.



www.proofmaster.net

ProofMaster Plus

Accurate communication of what final prints will look like is key to customer confidence in any print business. Unexpected results are costly, time-consuming and damage that confidence. ProofMaster Plus provides a complete quality control solution that allows you to verify and correct incoming files and provide color accurate proofs on screen and on paper.

Contractual quality for better communication between print-buyer and production

ProofMaster Plus provides **effortless setup** and allows for **out-of-the-box contract proofs** in line with the ISO 12647-7 and other industry color standards. Regardless of whether you're preparing files for **offset, gravure, newspaper, flexo- or screenprinting**, ProofMaster Plus' **Multi Channel color engine** provides an easy path to spot-on results. It plays well with specialty printing types such as packaging, consistently generating superb, **color-accurate proofs** and ensures to carry those results through to production and final output.

Built for flexibility and growth

ProofMaster Plus combines **unparalleled flexibility** and ease of use straight out of the box. ProofMaster consists of **different modules**: the

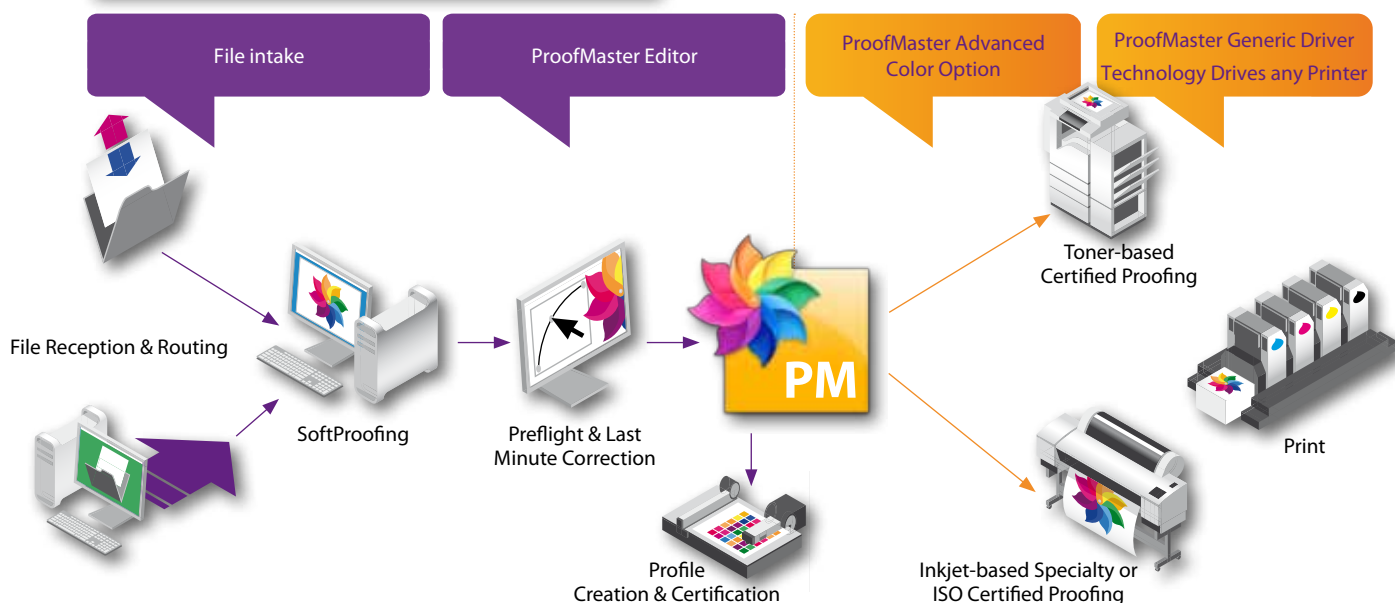
Calibrator, the Editor and the RIP, allowing the separation of calibration and profiling from job preparation and actual proofing. You can **easily add functionality** such as 1-Bit proofing or profile creation through the different available options.

Specialty Proofing and Packaging Mock-ups

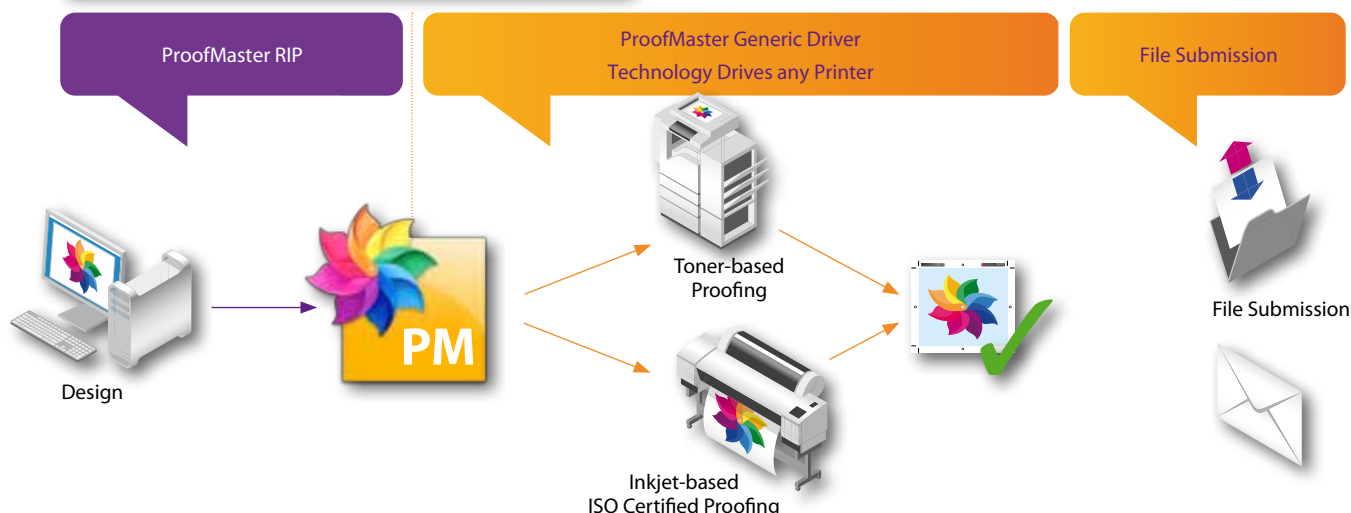
ProofMaster drives a wide range of printers, including models with cutting and specialty printing capabilities. The combination of ProofMaster with these devices goes beyond standardized proofing and allows you to simulate finished products such as metallic or transparent packaging foils. You can use white ink or varnish to simulate even better the actual look and feel of the product. The ProofMaster color engine and printer drivers handle the additional complexity of these printers with the same ease of use as they do regular 4 color work.

ProofMaster Plus workflow

For Printers



For Agencies



Benefits

Enable better communication between print-buyer and production

- Allows for ISO Color **standardized output**
- Supports **all PDF standards** (GWG, PDF-x4, PDFX-1a, ...)
- Create packaging proofs and mock-ups that look like the real deal

Achieve better quality

- Intuitive user interface allows for **easy calibration, profiling and fine-tuning**
- ProofMaster Editor allows for **last minute corrections** and **soft proofing**
- **Substrate simulation** capabilities allow you to match closely the output on media with specific textures or mimic paper with varying ink absorptions

Produce more... efficiently

- **Produce more jobs** per day through accurate proofing. Simply plug in additional print drivers to increase the type and amount of machines you can drive
- ProofMaster provides both the **automation capabilities** and specific interactive production tools needed to produce better and more



Features

Color, quality & Ink

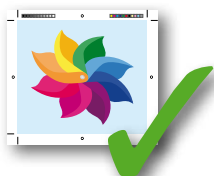
- ISO 12647-7 compliant output
- Comes with FOGRA/UGRA v3 media wedge
- Comes with a standard editor offering a host of image editing, production tools and soft proofing, also on PDF files
- Drives Multi Channel printers
- Fine-tunes results through DeviceLink profiles
- Works with high-end color-managed workflows (CMYK, RGB or Lab)
- Accepts all the main file formats: PS, PDF (X4, X3, X1a), EPS, PSD, AI, nCT/nLW, DCS2, TIFF (/IT) and the RAW format for digital photography
- Advanced handling of spot colors, fully CxF-compatible
- Provides a handy spot color tuner
- Can use standard and customized contact sheet templates
- Color setting import via Adobe CSF
- Supports all common spectrophotometers from X-Rite and Barbieri

Automation

- Easy set up of an unlimited number of proofing or photo printing queues and hot folders
- Automatic media optimization

General

- **Works on Mac OS® X (10.4-10.x) and Windows® XP Pro (Service Pack 2), Vista and 7**
- Drives up to two IP/USB/FW printers as standard (choose from three printer driver categories)
- Simultaneous rendering and printing for higher efficiency



ProofMaster Plus Applications

- | | |
|----------------------------------|---|
| ■ ProofMaster Editor: | Verification, correction and soft proofing. |
| ■ ProofMaster Calibrator: | Printer linearization and characterization. Creation of ICC profiles. |
| ■ ProofMaster RIP: | File interpretation and rasterization. |

ProofMaster Plus.

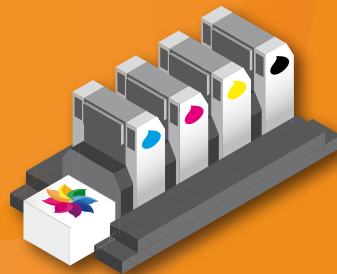
All-in-one quality management solution.



**Versatile proofing
for all types of production,
including packaging**



**Certification
to industry standards**



**Accurate match
between proof and print**



System requirements

Mac OS® 10.4.11 - 10.7.x

Processor: 2.0GHz Intel® Core™ 2 Duo
Memory: 4Gb
Hard Disk: SATA 160Gb (5400 RPM)
Optical drive: SATA 16x DVD-ROM
Network interface: Integrated Gigabit LAN
I/O port: USB 2.0

Windows® XP Professional SP2, Vista or Windows 7

Processor: 2.0GHz Intel® Core™ 2 Duo or equivalent AMD
Memory: 4Gb
Hard Disk: SATA 160Gb (7200 RPM)
Optical drive: SATA 16x DVD-ROM
Network interface: Integrated Gigabit LAN
I/O port: USB 2.0