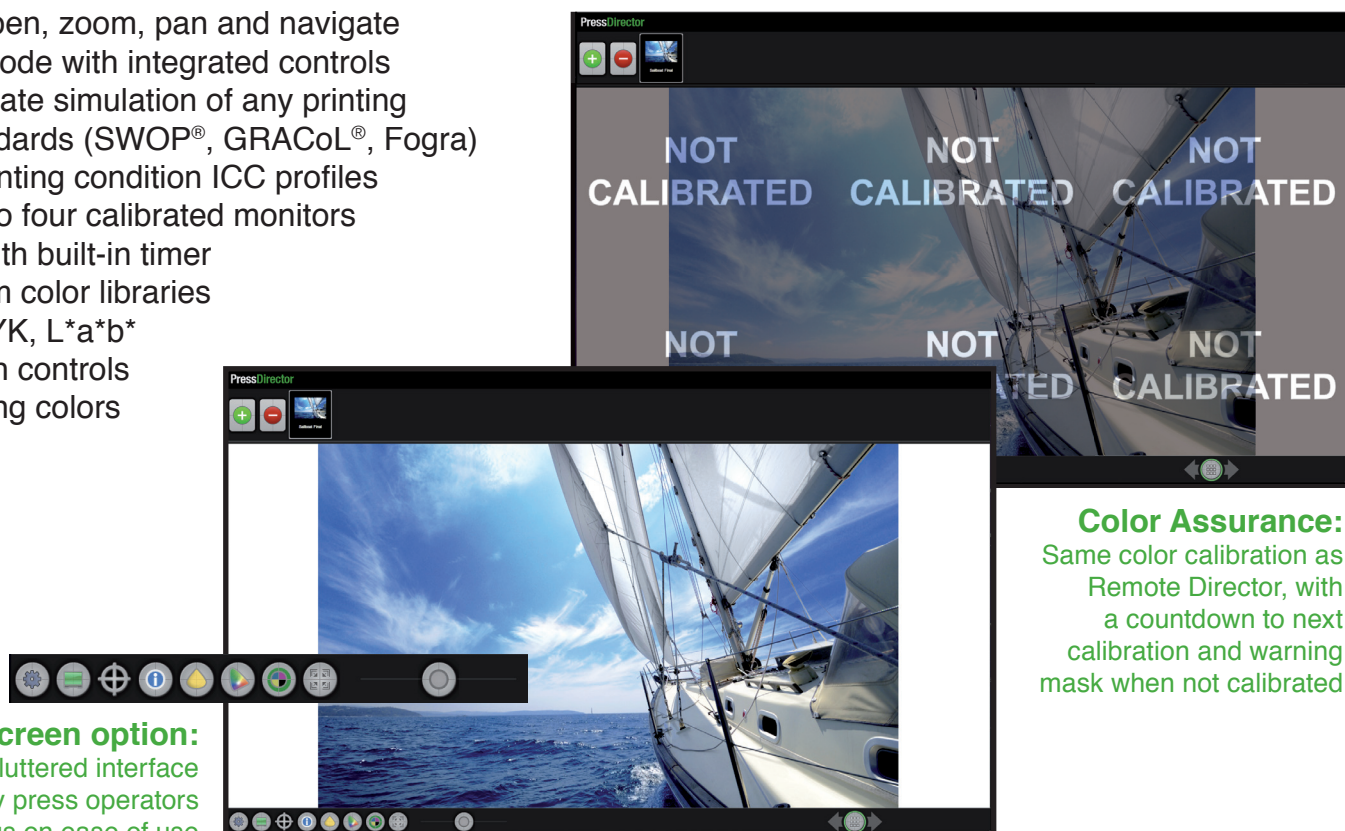


Pressroom Virtual Proofing with Proven Color Technology

- Simple interface allows you to open, zoom, pan and navigate
- Touch-screen or single screen mode with integrated controls
- ICC color management for accurate simulation of any printing condition, supports industry standards (SWOP®, GRACoL®, Fogra) as well as in-house reference printing condition ICC profiles
- Press sheet proofing across up to four calibrated monitors
- “One-click” monitor calibration with built-in timer
- Support for Pantone® and custom color libraries
- On-screen densitometer for CMYK, L*a*b*
- Support for third party view booth controls
- Channel palette allows for toggling colors
- Support for auto navigation
- Total ink coverage warnings
- Monitor gamut check

Touch Screen option:
Clean, uncluttered interface
designed by press operators
with a focus on ease of use



“Sky looks purple here”



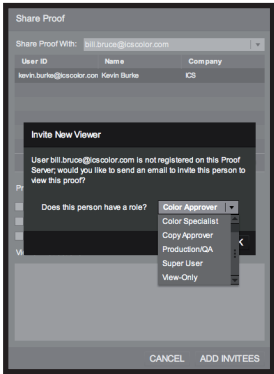
RemoteDirector

2734 Loker Avenue West, Suite J
Carlsbad, California 92010

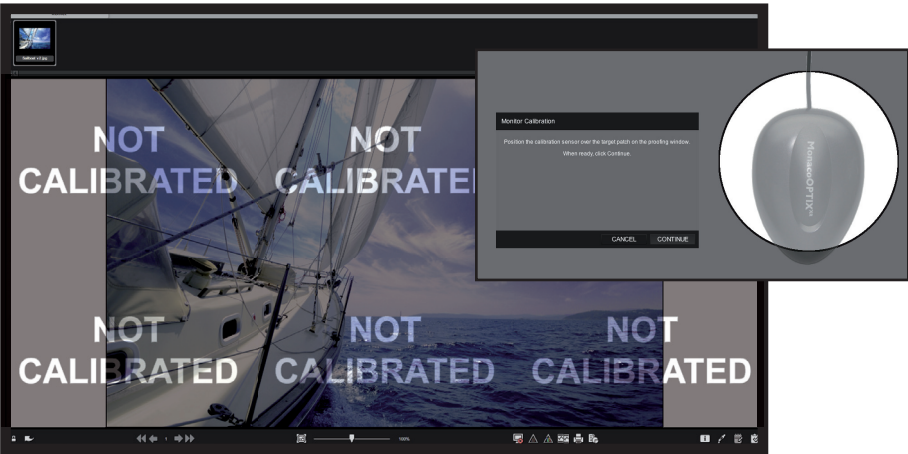
Telephone: 760.692.0493 – www.remotedirector.com

Precise Color Proofing in a Browser

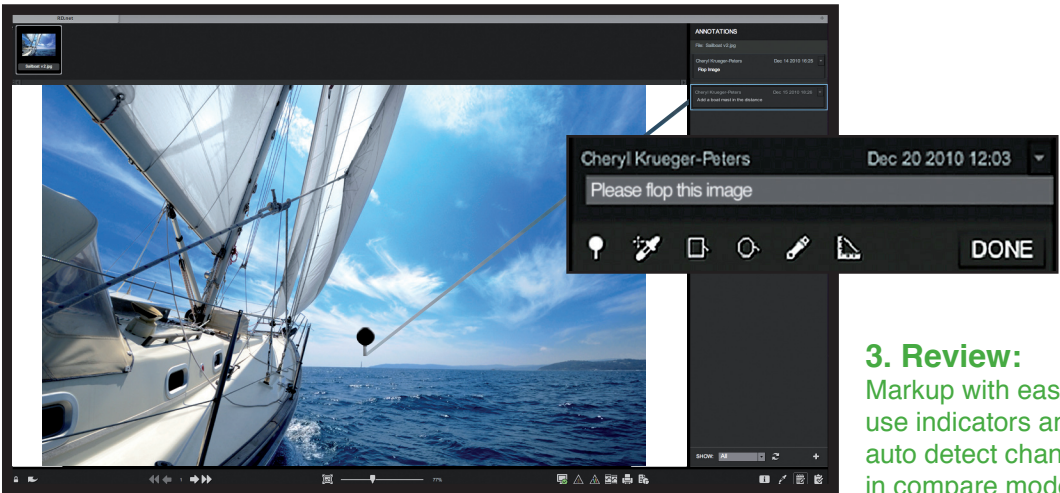
1. Share:
View proofs with
an email address
and our free
browser plugin



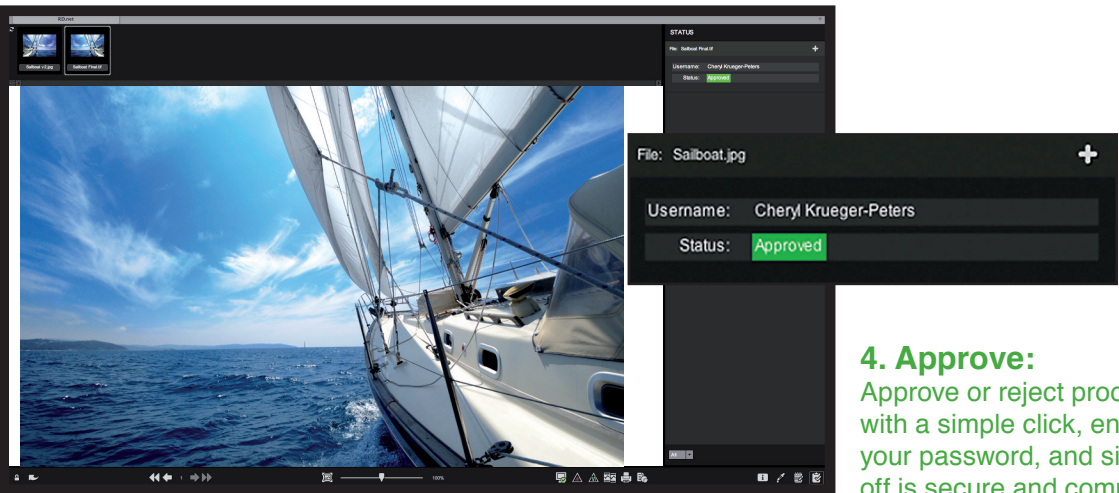
2. Calibrate:
Color Assurance allows
you to require a calibrated
display based on the role
of the proof reviewer



“Now I see what
you’re seeing”



3. Review:
Markup with easy-to-
use indicators and
auto detect changes
in compare mode



4. Approve:
Approve or reject proofs
with a simple click, enter
your password, and sign-
off is secure and complete

Complete Proof Management View:

- Filter and sort all of your proofs
- At-a-glance approval status indicators
- Track proofs throughout the workflow

Built-in Calibration:

- Uses patented L* and verification technology
- Spectral adaptation to balance supported monitors
- Require calibration for true contract-level virtual proofing

Spot Color Enabled:

- Accurate proofing for custom and Pantone® colors, for up to 24 channels

Integration:

- Complete tool set for integration into any workflow
- Web services API for the RD proofing engine
- Developer portal for support and documentation



“I see blue”